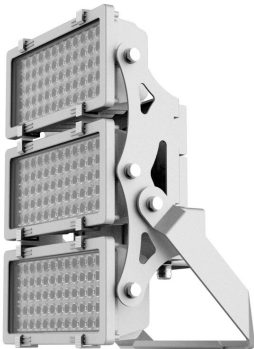


PRODUCT NO. 4871-040015

DOTLUX LED floodlight HLFplus 600W 4000K 1-10V dimmable 15° beam angle



to the product page

The compact high-power floodlight HLFplus is ideal for sports and soccer fields, large parking lots, construction site and crane lights, and much more.

- Extremely flexible application possibilities due to different beam angles (10°, 15°, 30°, 45°, 60°,100°x38°)
- Excellent light distribution with minimum ULR values and low light scattering losses due to asymmetrical beam angle 100°x38°.
- Safe operation outdoors thanks to powder-coated housing with high IP protection (IP66) and real glass cover
- Very high operational safety thanks to integrated Multi Driver Technology: each spotlight has several independent power supplies with integrated overvoltage protection 10KV and 7 years DOTLUX warranty with an above average lifetime: L80>80.000h
- Adjustable brackets for hanging, standing and wall mounting included
- Dimming function available on request (FUNK/ZIGBEE/DMX/DALI)
- This luminaire is flicker-free and therefore also suitable for high-definition (HD) TV recordings
- Sustainable product design due to easily replaceable components
- Other light colors can be ordered from 1pc onwards

SUCCESSION ARTICLE	-
PREDECESSOR ARTICLE	4240-060
WEIGHT IN KG	15
LUMEN PER WATT	117
POWER CONSUMPTION IN WATTS	600
NET LUMINOUS FLUX IN LUMENS	70000

BEAM ANGLE	30°
PROTECTION CLASS (IP)	IP66
LIGHT COLOR	white
INPUT VOLTAGE	176 - 240 V AC/DC
SERVICE LIFE	approx. 80.000 h at 25°C
COLOR TEMPERATURE IN KELVIN	4000
COLOR-RENDERING-INDEX	CRI > 82
POWER FACTOR	0,92
INRUSH CURRENT IN A	0
IK PROTECTION	IK08
LUMEN PER WATT	117
PROTECTION CLASS	I
VOLTAGE TYPE	AC/DC
HOUSING COLOUR	gray
SUITED FOR EMERGENCY LIGHTING	yes
SWITCH CYCLES	> 160.000
OVERVOLTAGE PROTECTION	up to 10000 V
WARRANTY IN YEARS	7
L80/B10	80000
SUITABLE FOR SURFACE MOUNTING	No
SUITABLE FOR MOUNTING	No
DIMMING WITHOUT DIMMER	No
ASSORTMENT	Proline

Dimensions

height: 163mm
length: 562mm
width: 335mm

ENERGY EFFICIENCY CLASS ACCORDING TO EU REGULATION 2019/2015	not required
LIFETIME L80/B10 AT 25°C	80000
LED-LIFETIME LIGHT SOURCE L70/B50 AT 25°C	160000
ETIM GRUPPEN-ID	EC001744
WITH ILLUMINANT	Yes
SUITABLE FOR WALL MOUNTING	Yes
SUITABLE FOR SUSPENDED MOUNTING	No
SUITABLE FOR CEILING MOUNTING	No
SUITABLE FOR WORKPLACE ACCORDING TO EN 12464-1	No
LAMP HOLDER	-
MATERIAL COVER	Glass transparent
TYPE OF CONTROL GEAR	LED operating device current- controlled
WITH CONTROL GEAR	Yes
DIMMING 0-10 V	Yes
DIMMING 1-10 V	Yes
DIMMING DALI	No
DIMMING DMX	No
DIMMING DSI	No
DIMMING POTENTIOMETER (INTEGRATED)	No
DIMMING LINESWITCH	No
DIMMING MANUFACTURER'S PROPRIETARY SYSTEM	No
DIMMING MAINS VOLTAGE MODULATION	No
DIMMING PHASE CUT-OFF	No
DIMMING PROGRAMMABLE	No
DIMMING RF	No
DIMMING SINE WAVE REDUCTION	No
DIMMING TOUCH AND DIM	No
DIMMING ZIGBEE	No
DIMMING WITH PUSH-BUTTON	No
DIMMING DEPENDING ON CONTROL GEAR	No
NO DIM FUNCTION	No
LIGHT DISTRIBUTOR	Reflector
COLOUR CONSISTENCY (MCADAM ELLIPSE)	SDCM6
IMPACT STRENGTH	IK08
LUMINAIRE WITH LIMITED SURFACE TEMPERATURE, SIGN "D" ACCORDING TO EN 60598-2-24	No
SUITABLE FOR EMERGENCY LIGHTING	Yes
WITH MOVEMENT SENSOR	No
WITH LIGHT SENSOR	No
COVERING OF THE LUMINAIRE WITH THERMALLY INSULATING MATERIAL POSSIBLE	No
FILAMENT TEST ACCORDING TO IEC 60695-2-11	-
CONSTANT LIGHT OUTPUT (CLO)	No
OPERATION BY BLUETOOTH	No
COMPATIBLE WITH CASAMBI	Yes
COMPATIBLE WITH APPLE HOMEKIT	No
COMPATIBLE WITH GOOGLE ASSISTANT	No

COMPATIBLE WITH AMAZON ALEXA	No
IFTTT SUPPORT AVAILABLE	No
REFLECTOR	-
SUITABLE FOR LOW VOLTAGE CABLE SYSTEM	No
SUITABLE FOR CLAMP-MOUNTING	No
SUITABLE FOR LIGHT-TRACK MOUNTING	No
SUITABLE FOR PEDESTAL/FLOOR MOUNTING	Yes
SUITABLE FOR TRAVERSE MOUNTING	Yes
EXCHANGEABLE CONTROL GEAR	Yes
LAMP TYPE	LED
EMERGENCY POWER SUPPLY INTEGRATED	No
SURFACE BRUSHED	No
DIMMING DALI-2	No
DIMMING PHASE CUT-ON	No
DIMMING GPRS	No
LIFETIME L70/B50 AT 25°C	160000
LIFETIME L90/B10 AT 25°C	40000
PULSE DURATION IN µs	0
LIFETIME L90/B50 AT 25°C	54000
BEG FUNDING	Only relevant in Germany
ENERGIEEFFIZIENZKLASSE DER LICHTQUELLE EINER LEUCHTE	D
LIGHT OUTLET	Direct
COLOUR OF LIGHT ADJUSTABLE	No
LUMINOUS FLUX ADJUSTABLE	No
BEAM ANGLE ADJUSTABLE	No
ADJUSTABILITY	Rotatable
LIGHT SHARING	Symmetric
BEAM ANGLE	Narrow beam 11 - 20°
SURFACE PROTECTION	Powder coating
CONNECTION TYPE	Free conductor end