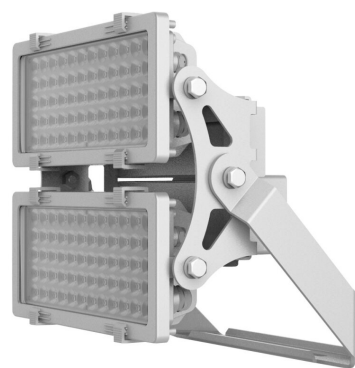


PRODUCT NO. 4870-040100

DOTLUX LED floodlight HLFplus 400W 4000K 1-10V dimmable 100°x38° beam angle



to the product page

The compact high-power floodlight HLFplus is ideal for sports and soccer fields, large parking lots, construction site and crane lights, and much more.

- Extremely flexible application possibilities due to different beam angles (10°, 15°, 30°, 45°, 60°, 100°x38°)
- Excellent light distribution with minimum ULR values and low light scattering losses
- Safe operation outdoors thanks to powder-coated housing with high IP protection (IP66) and real glass cover
- Very high operational safety thanks to integrated Multi Driver Technology: each spotlight has several independent power supplies with integrated overvoltage protection 10KV and 7 years DOTLUX warranty with an above average lifetime: L80>80.000h
- Adjustable brackets for hanging, standing and wall mounting included
- Dimming function available on request (FUNK/ZIGBEE/DMX/DALI)
- This luminaire is flicker-free and therefore also suitable for high-definition (HD) TV recordings
- Sustainable product design due to easily replaceable components
- Other light colors can be ordered from 1pc onwards

| | | | |
|-----------------------------|-------------|--|--------------------------|
| SUCCESSION ARTICLE | - | BEAM ANGLE | 100° x 38° |
| PREDECESSOR ARTICLE | 4239-090135 | PROTECTION CLASS (IP) | IP66 |
| | | LIGHT COLOR | white |
| WEIGHT IN KG | 10.8 | INPUT VOLTAGE | 176 - 240 V AC/DC |
| LUMEN PER WATT | 130 | SERVICE LIFE | approx. 80.000 h at 25°C |
| POWER CONSUMPTION IN WATTS | 400 | COLOR TEMPERATURE IN KELVIN | 4000 |
| NET LUMINOUS FLUX IN LUMENS | 52000 | COLOR-RENDERING-INDEX | CRI > 82 |
| | | POWER FACTOR | 0,92 |
| | | INRUSH CURRENT IN A | 0 |
| | | IK PROTECTION | IK08 |
| | | LUMEN PER WATT | 130 |
| | | PROTECTION CLASS | I |
| | | VOLTAGE TYPE | AC/DC |
| | | HOUSING COLOUR | gray |
| | | SUITED FOR EMERGENCY LIGHTING | yes |
| | | SWITCH CYCLES | > 160.000 |
| | | OVERVOLTAGE PROTECTION | up to 10000 V |
| | | WARRANTY IN YEARS | 7 |
| | | L80/B10 | 80000 |
| | | SUITABLE FOR SURFACE MOUNTING | No |
| | | SUITABLE FOR MOUNTING | No |
| | | DIMMING WITHOUT DIMMER | No |
| | | ENERGY EFFICIENCY CLASS ACCORDING TO EU REGULATION 2019/2015 | not required |
| | | LIFETIME L80/B10 AT 25°C | 80000 |

Dimensions

height: 159mm
length: 440mm
width: 335mm

| | |
|---|---|
| LED-LIFETIME LIGHT SOURCE L70/B50 AT 25°C | 160000 |
| ETIM GRUPPEN-ID | EC001744 |
| WITH ILLUMINANT | Yes |
| SUITABLE FOR WALL MOUNTING | Yes |
| SUITABLE FOR SUSPENDED MOUNTING | No |
| SUITABLE FOR CEILING MOUNTING | No |
| SUITABLE FOR WORKPLACE ACCORDING TO EN 12464-1 | No |
| LAMP HOLDER | - |
| MATERIAL COVER | Glass transparent |
| TYPE OF CONTROL GEAR | LED operating device current-controlled |
| WITH CONTROL GEAR | Yes |
| DIMMING 0-10 V | Yes |
| DIMMING 1-10 V | Yes |
| DIMMING DALI | No |
| DIMMING DMX | No |
| DIMMING DSI | No |
| DIMMING POTENTIOMETER (INTEGRATED) | No |
| DIMMING LINESWITCH | No |
| DIMMING MANUFACTURER'S PROPRIETARY SYSTEM | No |
| DIMMING MAINS VOLTAGE MODULATION | No |
| DIMMING PHASE CUT-OFF | No |
| DIMMING PROGRAMMABLE | No |
| DIMMING RF | No |
| DIMMING SINE WAVE REDUCTION | No |
| DIMMING TOUCH AND DIM | No |
| DIMMING ZIGBEE | No |
| DIMMING WITH PUSH-BUTTON | No |
| DIMMING DEPENDING ON CONTROL GEAR | No |
| NO DIM FUNCTION | No |
| LIGHT DISTRIBUTOR | Reflector |
| COLOUR CONSISTENCY (MCADAM ELLIPSE) | SDCM6 |
| IMPACT STRENGTH | IK08 |
| LUMINAIRE WITH LIMITED SURFACE TEMPERATURE, SIGN "D" ACCORDING TO EN 60598-2-24 | No |
| SUITABLE FOR EMERGENCY LIGHTING | Yes |
| WITH MOVEMENT SENSOR | No |
| WITH LIGHT SENSOR | No |
| COVERING OF THE LUMINAIRE WITH THERMALLY INSULATING MATERIAL POSSIBLE | No |
| FILAMENT TEST ACCORDING TO IEC 60695-2-11 | - |
| CONSTANT LIGHT OUTPUT (CLO) | No |
| OPERATION BY BLUETOOTH | No |
| COMPATIBLE WITH CASAMBI | Yes |
| COMPATIBLE WITH APPLE HOMEKIT | No |
| COMPATIBLE WITH GOOGLE ASSISTANT | No |
| COMPATIBLE WITH AMAZON ALEXA | No |
| IFTTT SUPPORT AVAILABLE | No |
| REFLECTOR | - |

| | |
|--|--------------------------|
| SUITABLE FOR LOW VOLTAGE CABLE SYSTEM | No |
| SUITABLE FOR CLAMP-MOUNTING | No |
| SUITABLE FOR LIGHT-TRACK MOUNTING | No |
| SUITABLE FOR PEDESTAL/FLOOR MOUNTING | Yes |
| SUITABLE FOR TRAVERSE MOUNTING | Yes |
| EXCHANGEABLE CONTROL GEAR | Yes |
| LAMP TYPE | LED |
| EMERGENCY POWER SUPPLY INTEGRATED | No |
| SURFACE BRUSHED | No |
| DIMMING DALI-2 | No |
| DIMMING PHASE CUT-ON | No |
| DIMMING GPRS | No |
| LIFETIME L70/B50 AT 25°C | 160000 |
| LIFETIME L90/B10 AT 25°C | 40000 |
| PULSE DURATION IN µS | 0 |
| LIFETIME L90/B50 AT 25°C | 54000 |
| BEG FUNDING | only relevant in Germany |
| ENERGIEEFFIZIENZKLASSE DER LICHTQUELLE EINER LEUCHTE | D |
| LIGHT SHARING | Asymmetric |
| LIGHT OUTLET | Direct |
| COLOUR OF LIGHT ADJUSTABLE | No |
| LUMINOUS FLUX ADJUSTABLE | No |
| BEAM ANGLE ADJUSTABLE | No |
| ADJUSTABILITY | Rotatable |
| SURFACE PROTECTION | Powder coating |
| CONNECTION TYPE | Free conductor end |
| BEAM ANGLE | Extreme wide beam >80° |