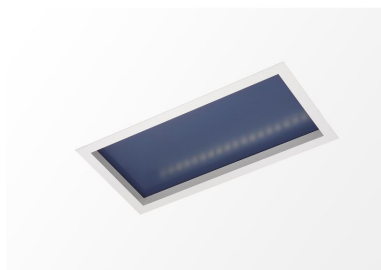


PRODUCT NO. 6299-099038

DOTLUX LED recessed light SUNLIGHThcl 620x310mm 50W 2700-5700K Tuya



to the product page

- Simulates natural sunlight thanks to asymmetrical light distribution and HCL control
- Most natural color rendering CRI > 92 for demanding users
- High-quality, powder-coated and visually appealing metal housing
- Glare-free working thanks to UGR<19 (suitable for VDU workstations)
- Durable construction thanks to non-yellowing PMMA lenses ensures color-stable light output
- Smart control via the Tuya app
- Suitable for ceiling mounting
- Mounting on grid & drywall ceiling possible
- The luminaire is supplied with a power supply unit and mounting clips

SUCCESSION ARTICLE	-
WEIGHT IN KG	1.484
POWER CONSUMPTION IN WATTS	50
LUMEN PER WATT	53
NET LUMINOUS FLUX IN LUMENS	2640

Dimensions

length: 620mm
width: 310mm
height: 190mm

BEAM ANGLE	38
PROTECTION CLASS (IP)	IP20
LIGHT COLOR	white
INPUT VOLTAGE	220 - 240 V AC
COLOR TEMPERATURE IN KELVIN	2700-5700
COLOR-RENDERING-INDEX	CRI > 92
POWER FACTOR	0,9
IK protection	
LUMEN PER WATT	53
PROTECTION CLASS	II
VOLTAGE TYPE	AC
HOUSING COLOUR	white
SUITED FOR EMERGENCY LIGHTING	No
INSTALLATION OPENING WIDTH IN MM	290
INSTALLATION OPENING DIAMETER IN MM	-
INSTALLATION OPENING LENGHT IN MM	600
INPUT VOLTAGE SPAN	220-240
WARRANTY IN YEARS	5
L80/B10	80000
RATED CURRENT	0.25
SUITABLE FOR SURFACE MOUNTING	Yes
SUITABLE FOR MOUNTING	Yes
ENABLED LICENSED PRODUCT	Yes
INPUT VOLTAGE RANGE LUMINAIRE	220-240

ENERGY EFFICIENCY CLASS ACCORDING TO EU REGULATION 2019/2015	not required
LIFETIME L80/B10 AT 25°C	80000
LED-LIFETIME LIGHT SOURCE L70/B50 AT 25°C	10000
ETIM GRUPPEN-ID	EC002892
WITH ILLUMINANT	Yes
SUITABLE FOR WALL MOUNTING	Yes
SUITABLE FOR SUSPENDED MOUNTING	Yes
SUITABLE FOR CEILING MOUNTING	Yes
SUITABLE FOR LIGHT LINE CONFIGURATION	No
SUITABLE FOR WORKPLACE ACCORDING TO EN 12464-1	No
LAMP HOLDER	-
TYPE OF CONTROL GEAR	LED operating device current- controlled
WITH CONTROL GEAR	Yes
DIMMING 0-10 V	No
DIMMING 1-10 V	No
DIMMING DALI	No
DIMMING DMX	No
DIMMING DSI	No
DIMMING POTENTIOMETER (INTEGRATED)	No
DIMMING LINESWITCH	No
DIMMING MANUFACTURER'S PROPRIETARY SYSTEM	Yes
DIMMING MAINS VOLTAGE MODULATION	No
DIMMING PHASE CUT-OFF	No
DIMMING PROGRAMMABLE	Yes
DIMMING RF	No
DIMMING SINE WAVE REDUCTION	No
DIMMING TOUCH AND DIM	No
DIMMING ZIGBEE	No
DIMMING WITH PUSH-BUTTON	No
DIMMING DEPENDING ON CONTROL GEAR	Yes
NO DIM FUNCTION	No
LIGHT DISTRIBUTOR	Focal lens
COLOUR CONSISTENCY (MCADAM ELLIPSE)	SDCM6
DEGREE OF PROTECTION (NEMA)	1
IMPACT STRENGTH	IK02
LUMINAIRE WITH LIMITED SURFACE TEMPERATURE, SIGN "D" ACCORDING TO EN 60598-2-24	No
SUITABLE FOR EMERGENCY LIGHTING	No
WITH MOVEMENT SENSOR	No
COVERING OF THE LUMINAIRE WITH THERMALLY INSULATING MATERIAL POSSIBLE	No
WITH AIR SLOTS	No
FILAMENT TEST ACCORDING TO IEC 60695-2-11	650 °C - 30 s
CONSTANT LIGHT OUTPUT (CLO)	No
CONNECTION TYPE	Plug connection
PHOTOBIOLOGICAL SAFETY ACCORDING TO EN 62471	RG0

OPERATION BY BLUETOOTH	Yes
COMPATIBLE WITH CASAMBI	No
COMPATIBLE WITH APPLE HOMEKIT	No
COMPATIBLE WITH GOOGLE ASSISTANT	No
COMPATIBLE WITH AMAZON ALEXA	No
IFTTT SUPPORT AVAILABLE	No
EXCHANGEABLE CONTROL GEAR	Yes
SUITABLE FOR LAMP POWER IN W	50
LAMP TYPE	LED exchangeable
EMERGENCY POWER SUPPLY INTEGRATED	No
DIMMING DALI-2	No
DIMMING PHASE CUT-ON	No
DIMMING GPRS	No
LIFETIME L70/B50 AT 25°C	10000
LIFETIME L90/B10 AT 25°C	50000
BEG FUNDING	Only relevant in Germany
ENERGIEEFFIZIENZKLASSE DER LICHTQUELLE EINER LEUCHTE	G
LIGHT SHARING	Asymmetric
LIGHT OUTLET	Direct
TYPE OF WIRING	Suitable for through wiring
BEAM ANGLE ADJUSTABLE	No
COLOUR OF LIGHT ADJUSTABLE	Continuously variable
LUMINOUS FLUX ADJUSTABLE	Continuously variable
TYPE OF GRID	White
SURFACE PROTECTION HOUSING	Powder coating
BEAM ANGLE	Medium beam 21-40°
MATERIAL COVER	Other