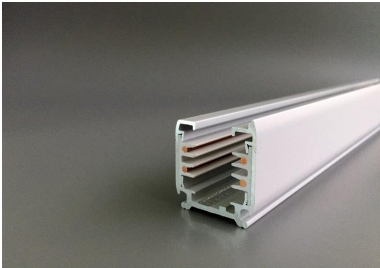


PRODUCT NO. 3893-W2

DOTLUX 3 phase power rail, 2 m, white matt



to the product page

- 3 phase power rail, 2 m. white

SUCCESSION ARTICLE	-
WEIGHT IN KG	1.7

Dimensions

length: 2000mm
width: 31mm
height: 33mm

PROTECTION CLASS	none
SIMILAR TO RAL-COLOUR	9003
SUITABLE FOR SURFACE MOUNTING	Yes
ETIM GRUPPEN-ID	EC000101
SUITABLE FOR SUSPENDED MOUNTING	Yes
SURFACE-MOUNTED	Yes
BENDABLE	Nein
SUITABLE FOR BUS CONNECTION	Nein
BUILT-IN	No
MATERIAL	Aluminium
BEG FUNDING	Only relevant in Germany
SURFACE FINISHING	Matt
SHAPE	Other
COLOUR	White