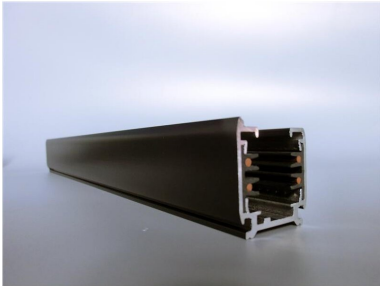


PRODUCT NO. 3893-53

DOTLUX 3 phase power rail, 3 m, black matt



to the product page

- 3 phase power rail, 3 m. black

SUCCESSION ARTICLE	-
WEIGHT IN KG	2.6

Dimensions

length: 3000mm  
width: 33mm  
height: 36mm

PROTECTION CLASS	none
SIMILAR TO RAL-COLOUR	9005
SUITABLE FOR SURFACE MOUNTING	Yes
ETIM GRUPPEN-ID	EC000101
SUITABLE FOR SUSPENDE MOUNTING	Yes
SURFACE-MOUNTED	Yes
BENDABLE	Nein
SUITABLE FOR BUS CONNECTION	Nein
BUILT-IN	No
MATERIAL	Aluminium
BEG FUNDING	Only relevant in Germany
SURFACE FINISHING	Matt
SHAPE	Other
COLOUR	Black