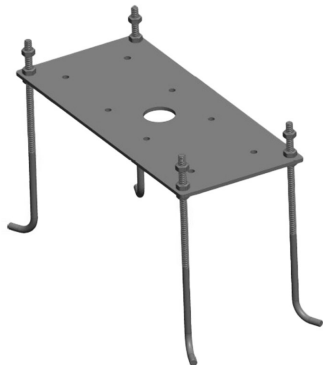


PRODUCT NO. 4968

Concrete anchor, stainless steel, adjustable mounting height for LED solar bollard lights
FLASHground and LED bollard lights WAY and CONEground



to the product page

Concrete anchor, stainless steel adjustable mounting height for LED solar bollard lights FLASHground
and LED bollard lights CONEground, FLASHground and WAY.

Set consisting of:

- Plate with mounting holes suitable for bollard lights FLASHground, WAY and CONEground (dimensions: 210 x 75 mm)
- 4 ground anchors (length: 175 mm)
- Screws, nuts and washers for fastening the bollard lights

SUCCESSION ARTICLE	-	ETIM GRUPPEN-ID	EC002557
WEIGHT IN KG	0.532	COLOUR	Stainless steel
		BEG FUNDING	Only relevant in Germany

Dimensions

length: 260mm

width: 115mm

height: 3mm